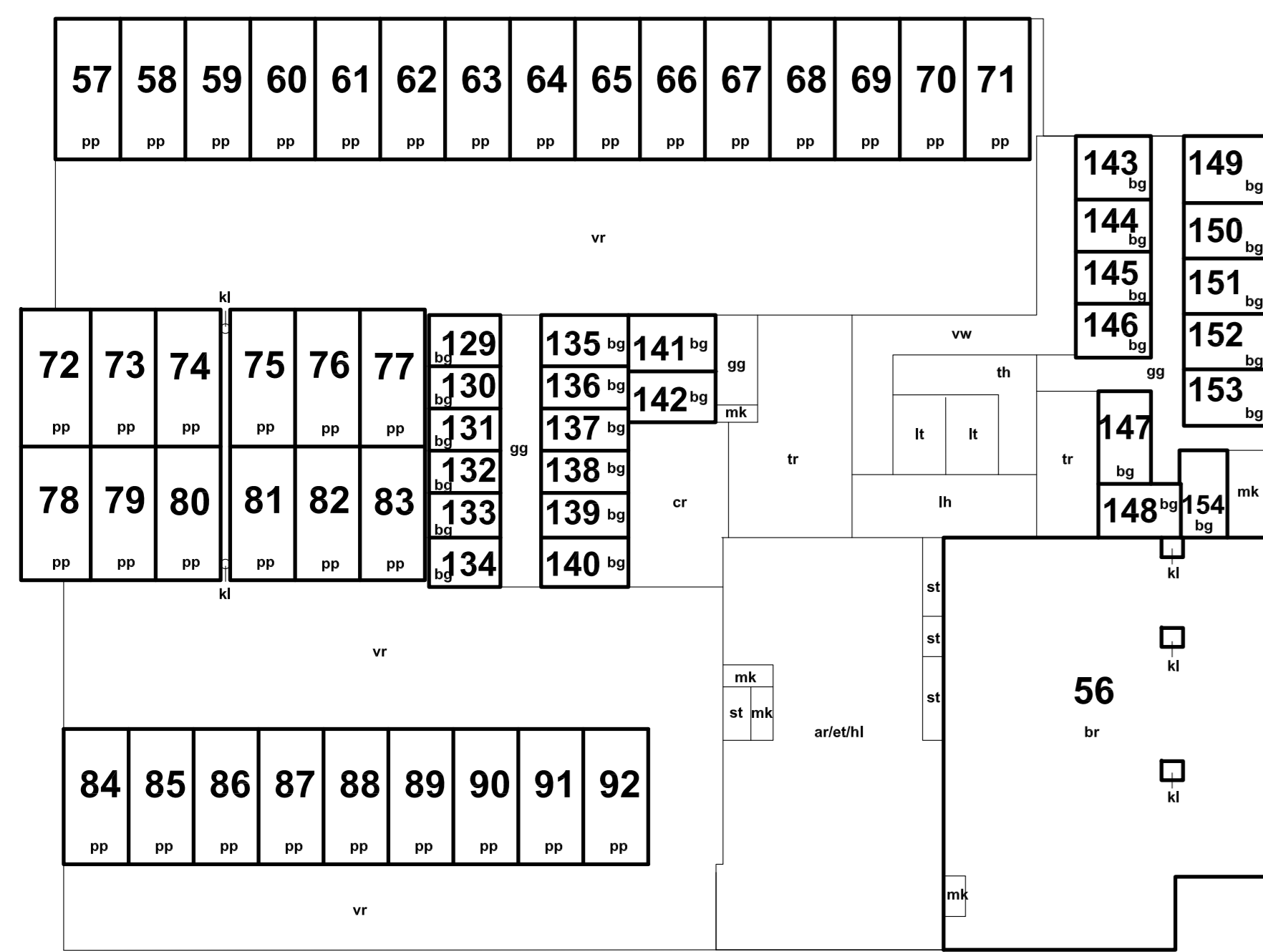
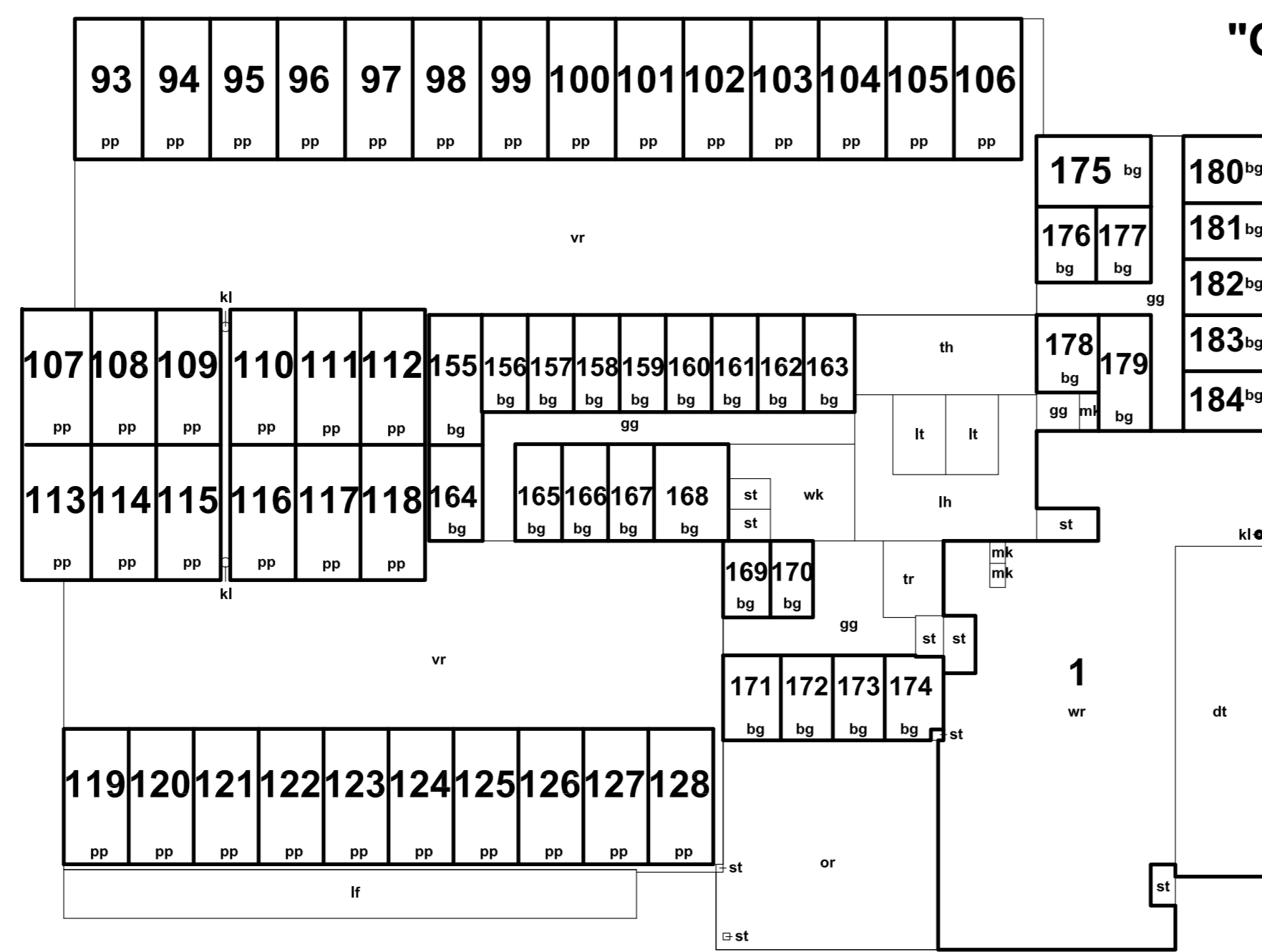


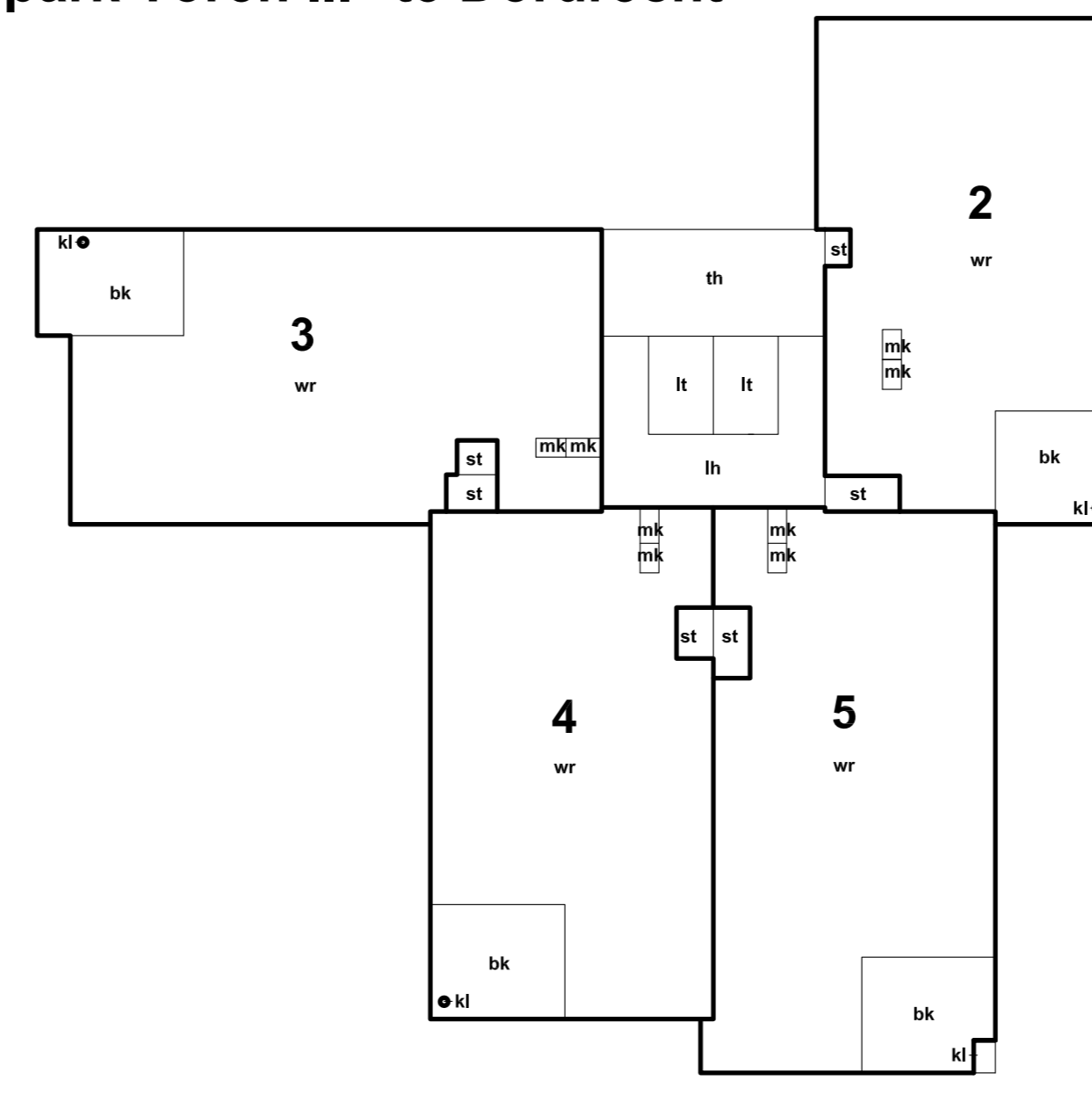
"Overkampark Toren III" te Dordrecht



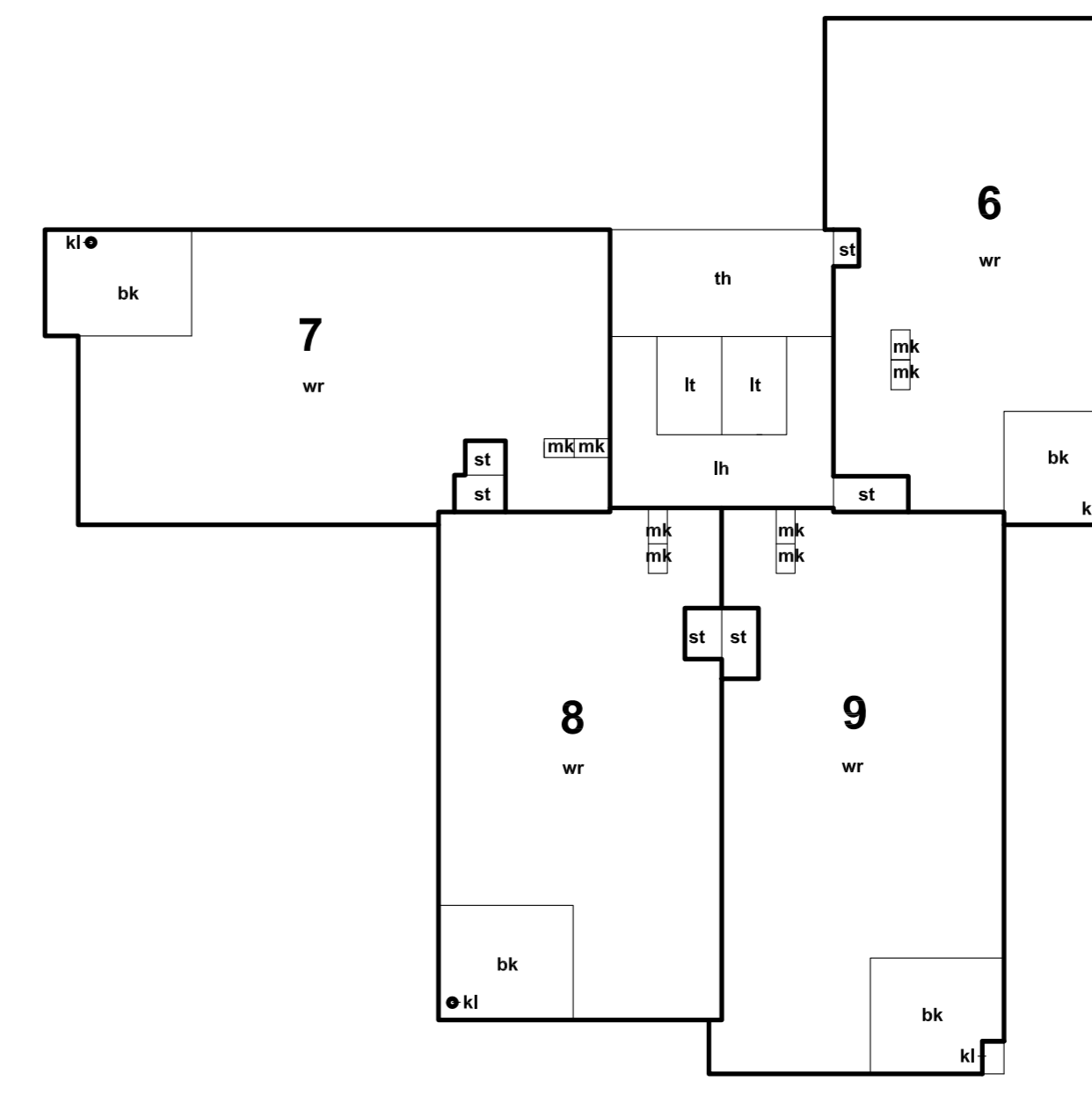
begane grond



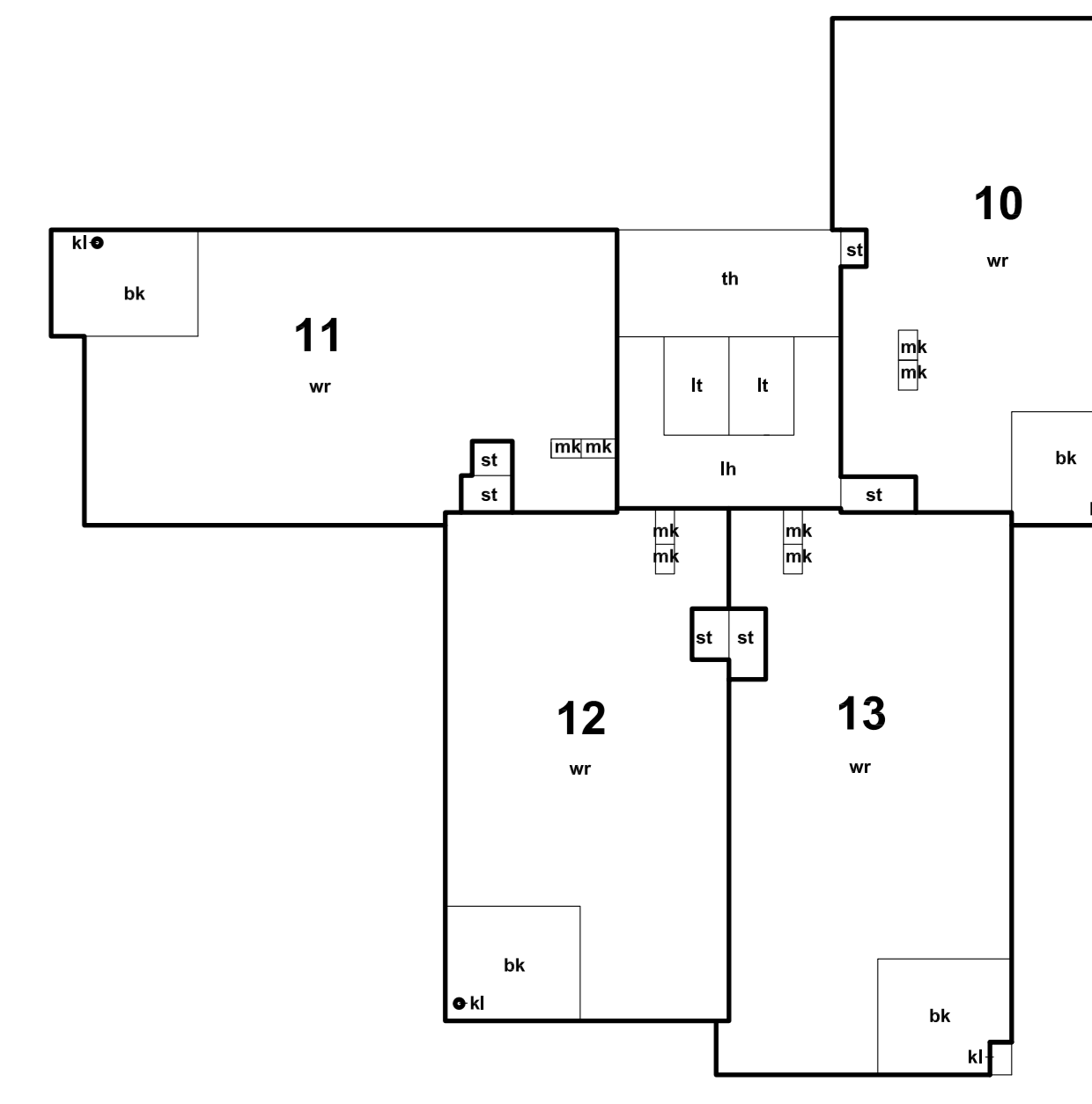
1e verdieping



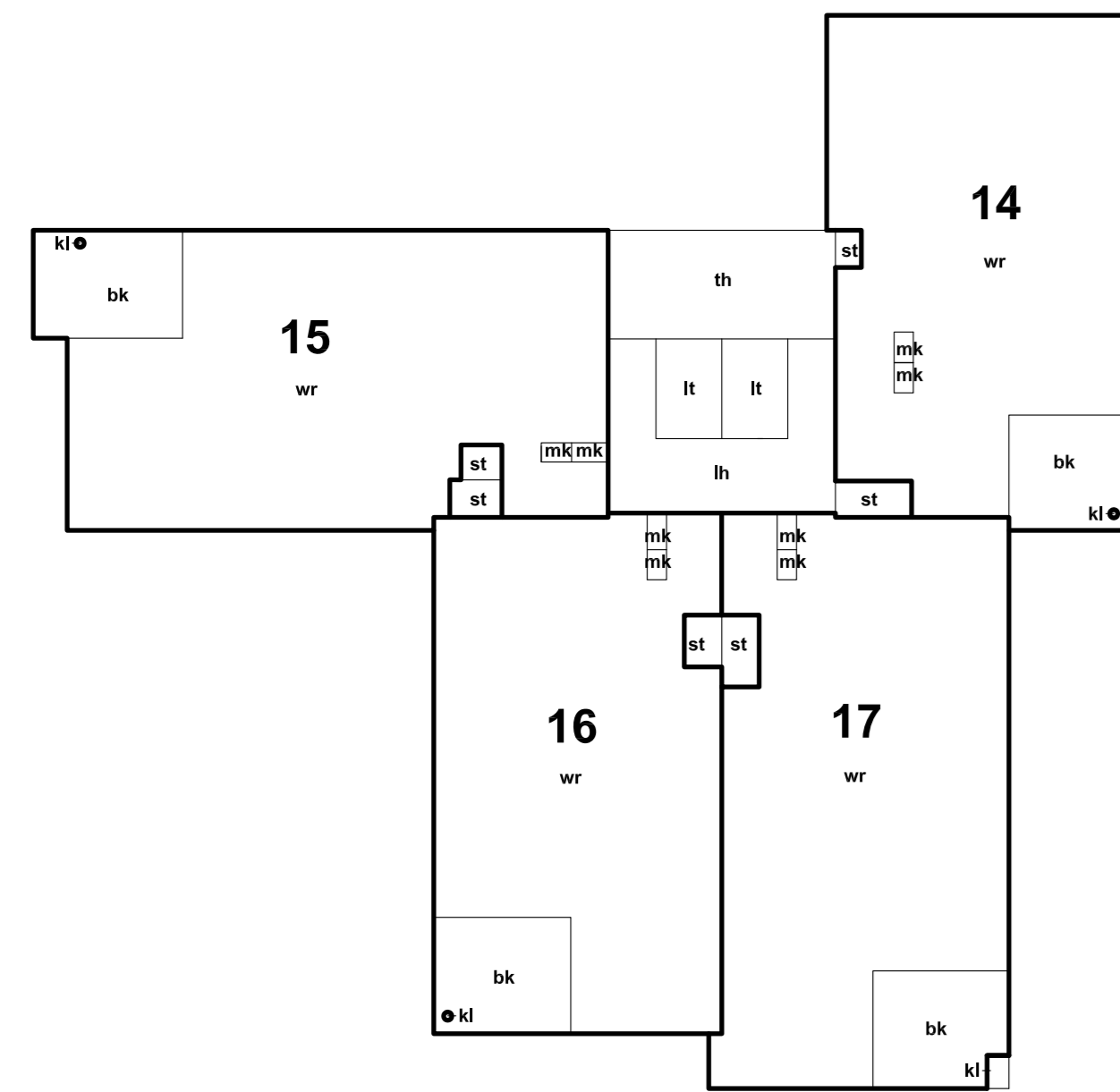
2e verdieping



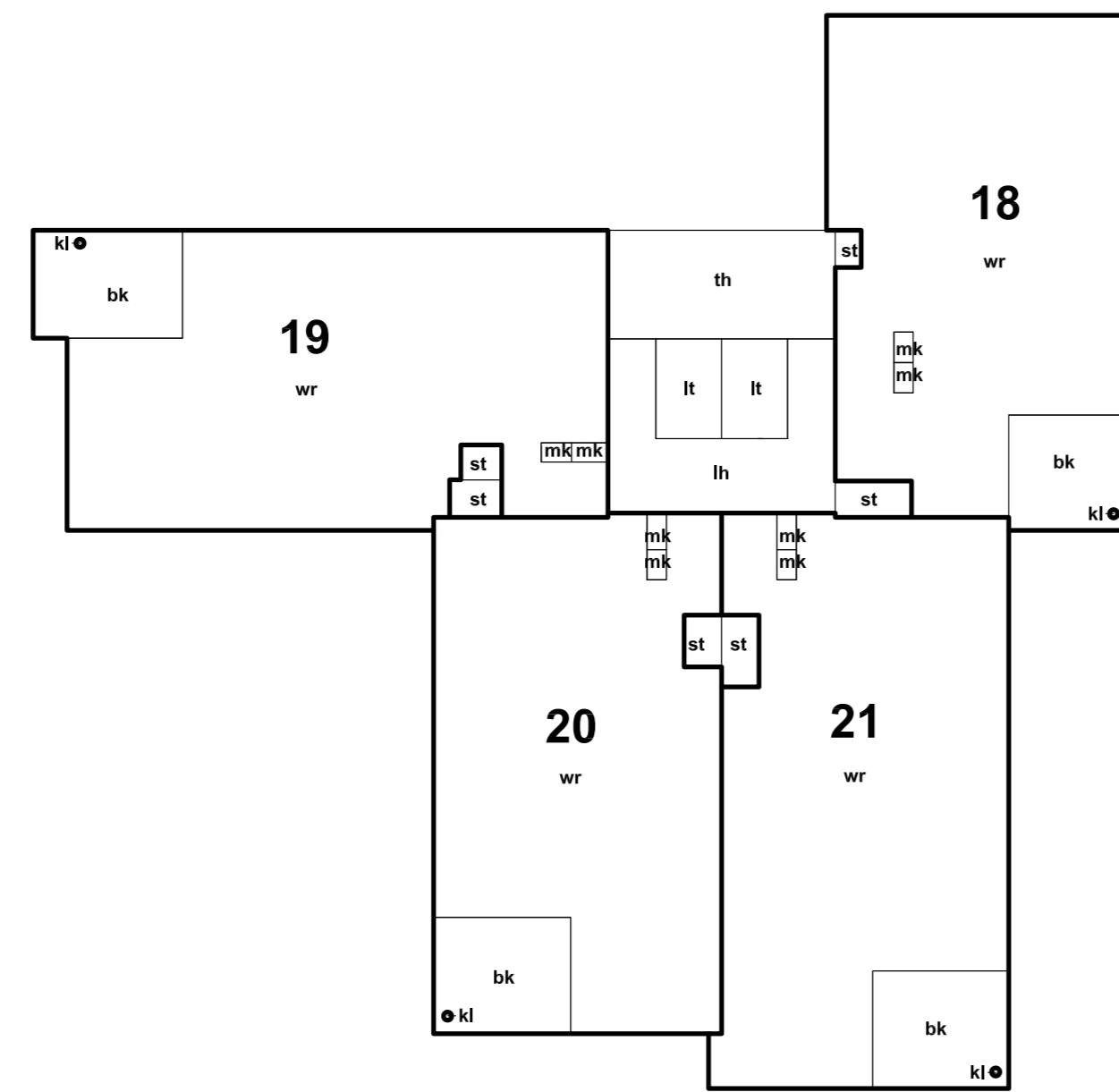
3e verdieping



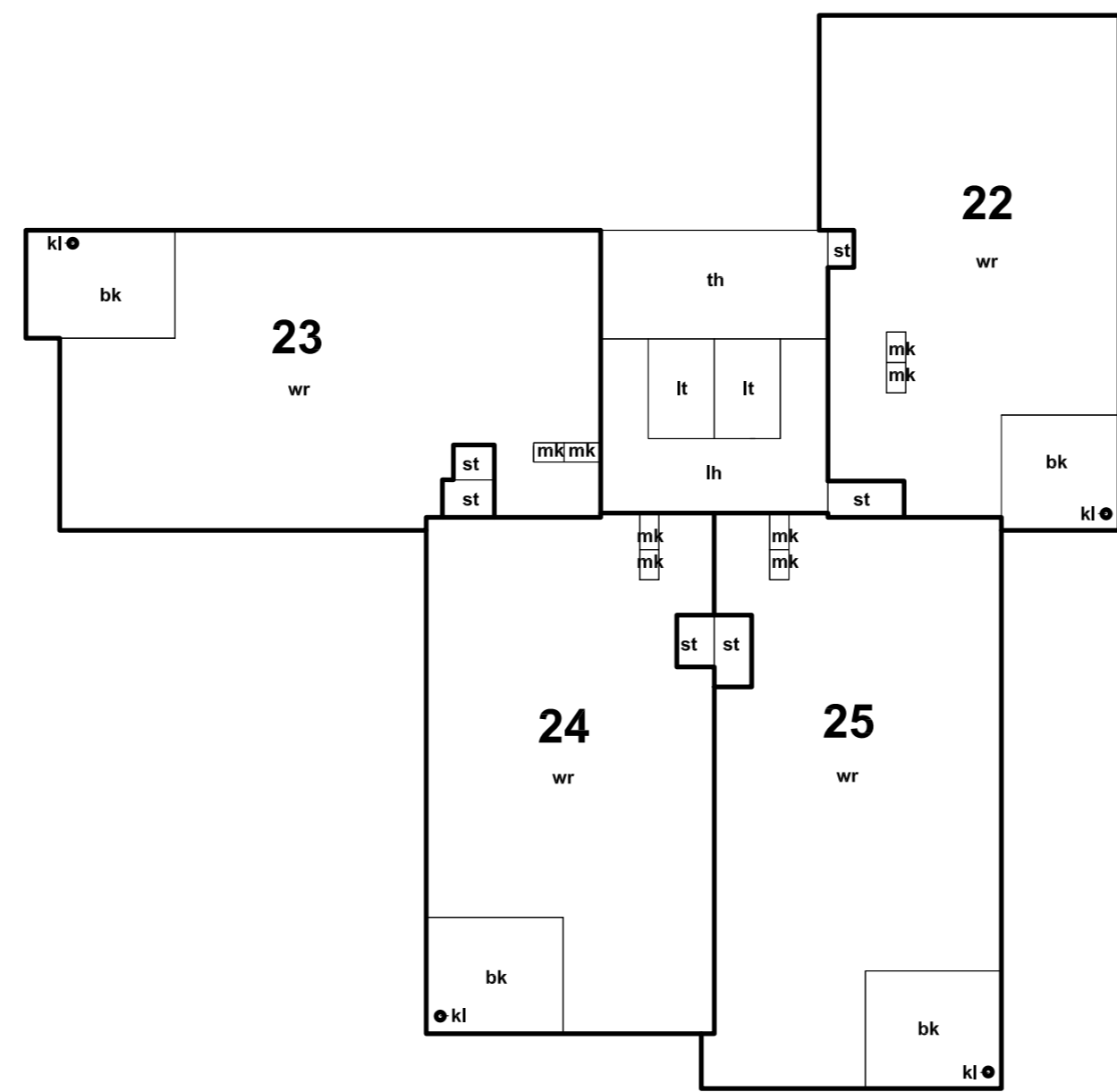
4e verdieping



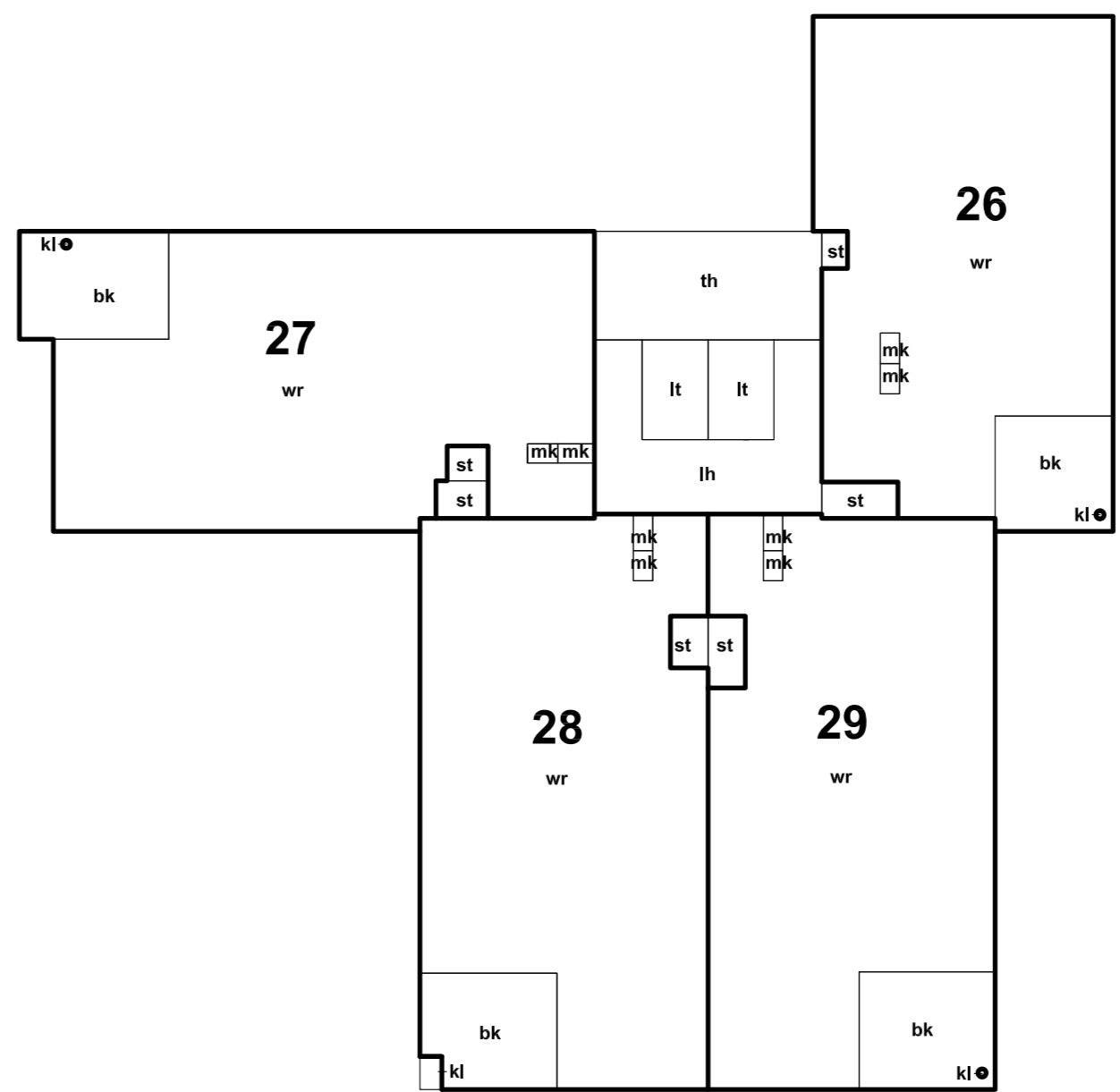
5e verdieping



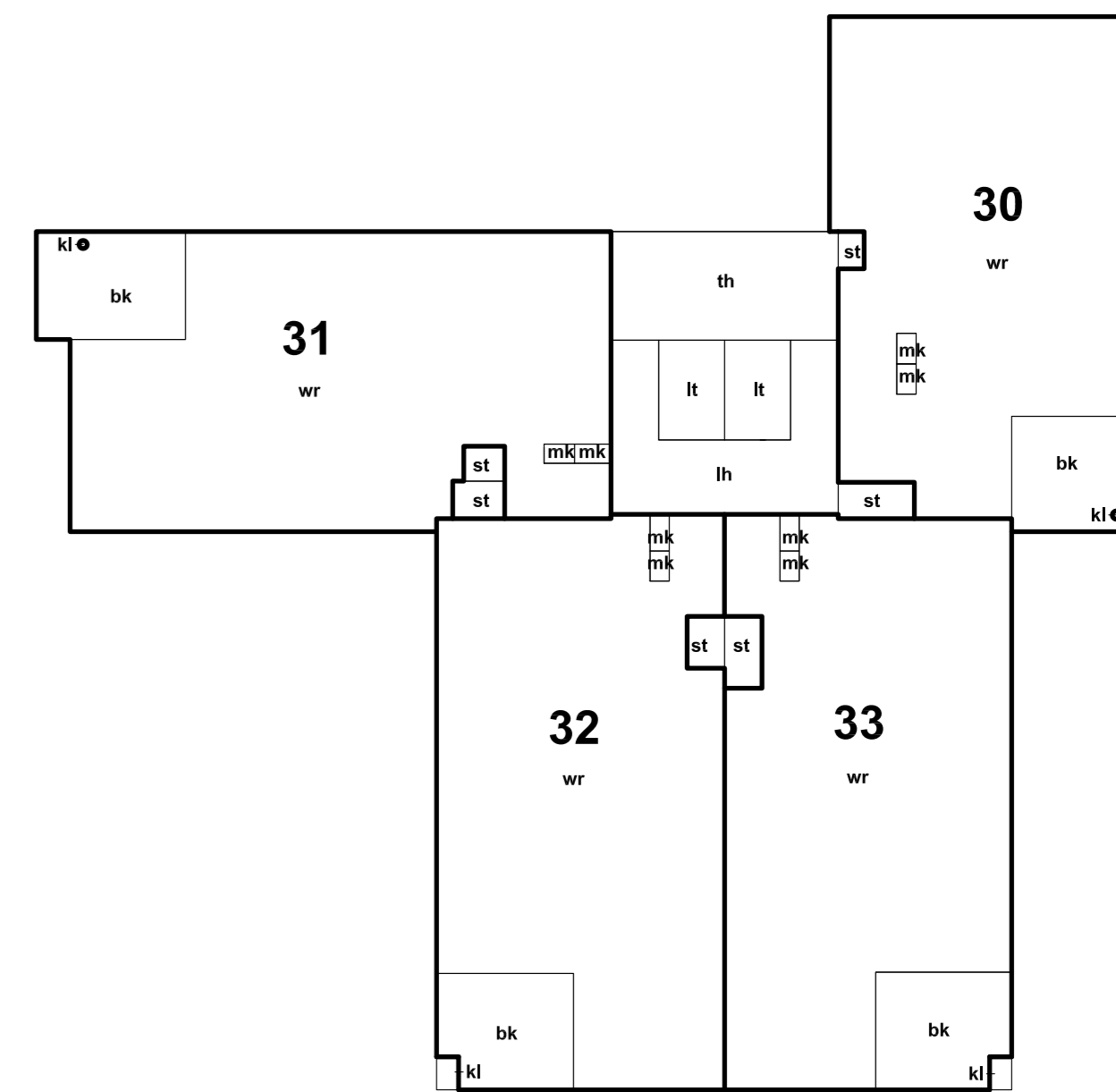
6e verdieping



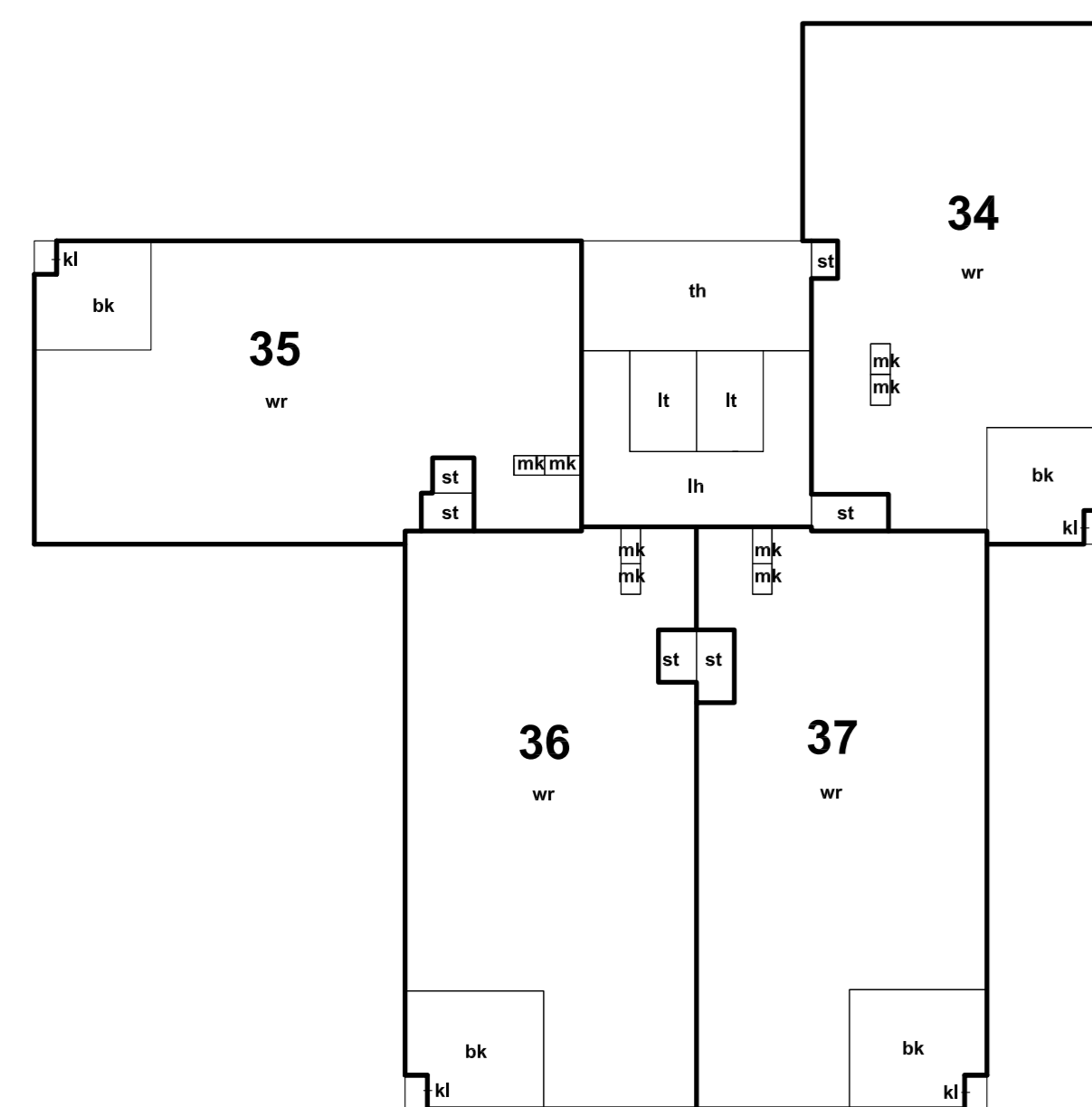
7e verdieping



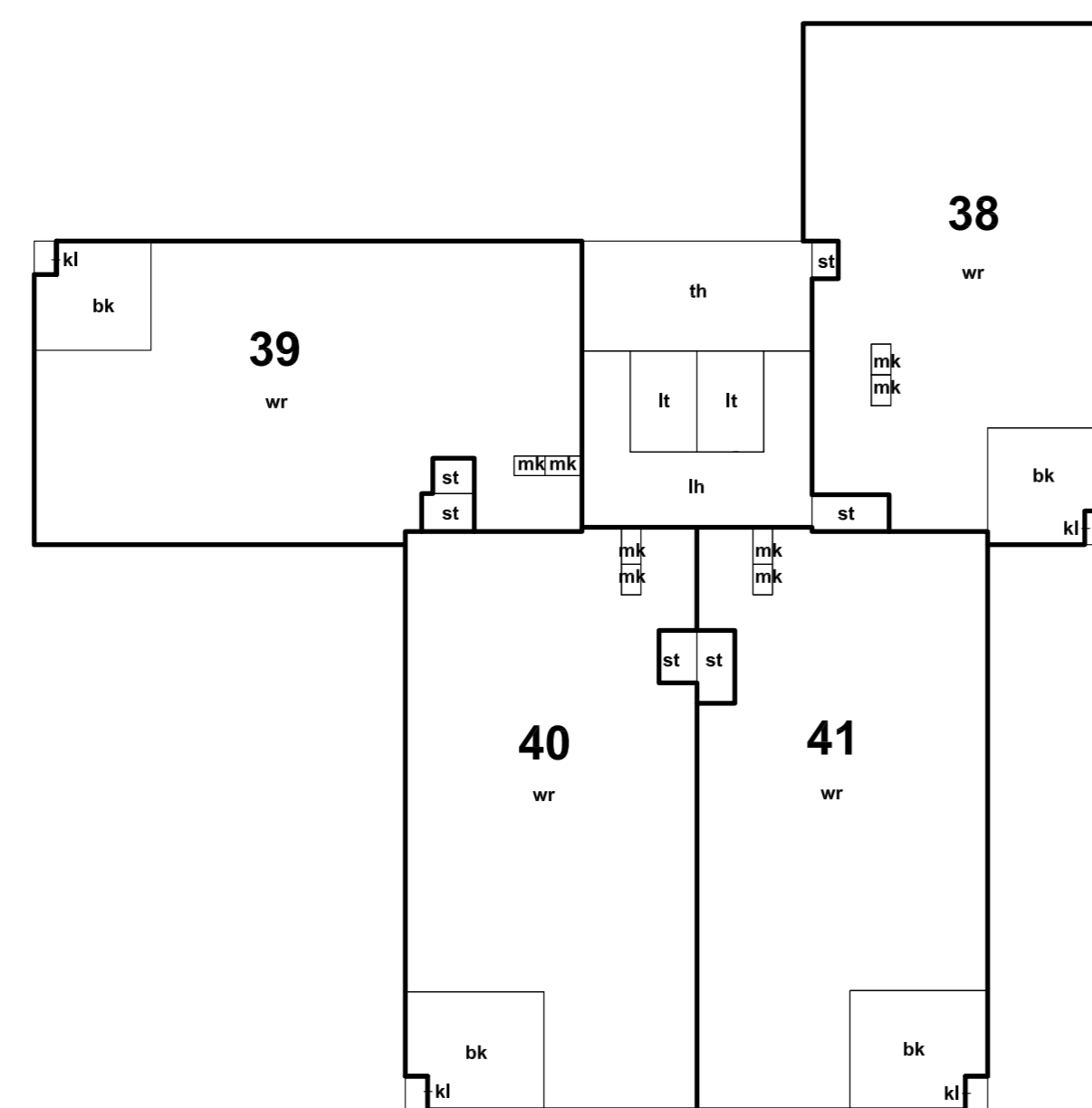
8e verdieping



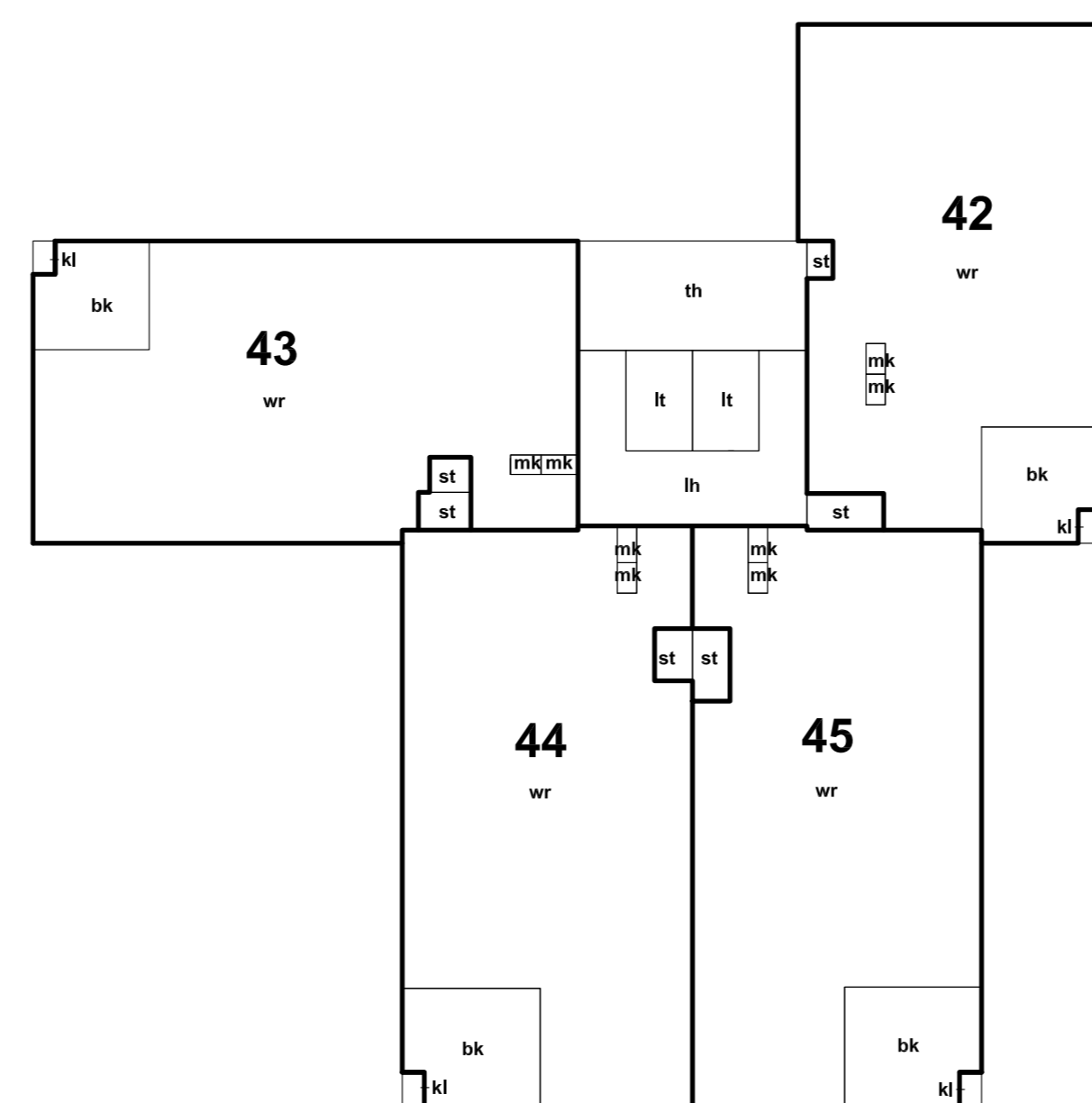
9e verdieping



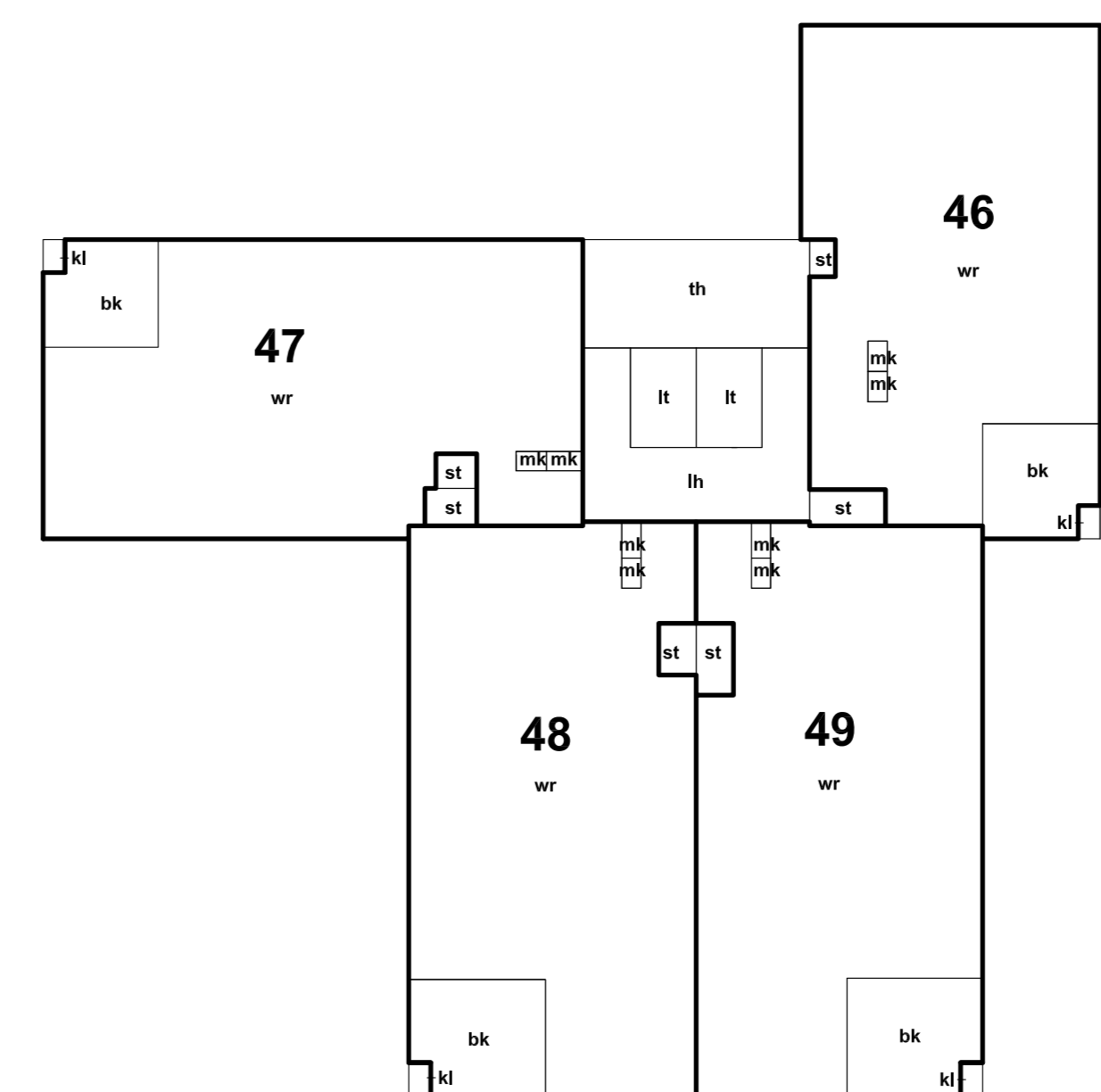
10e verdieping



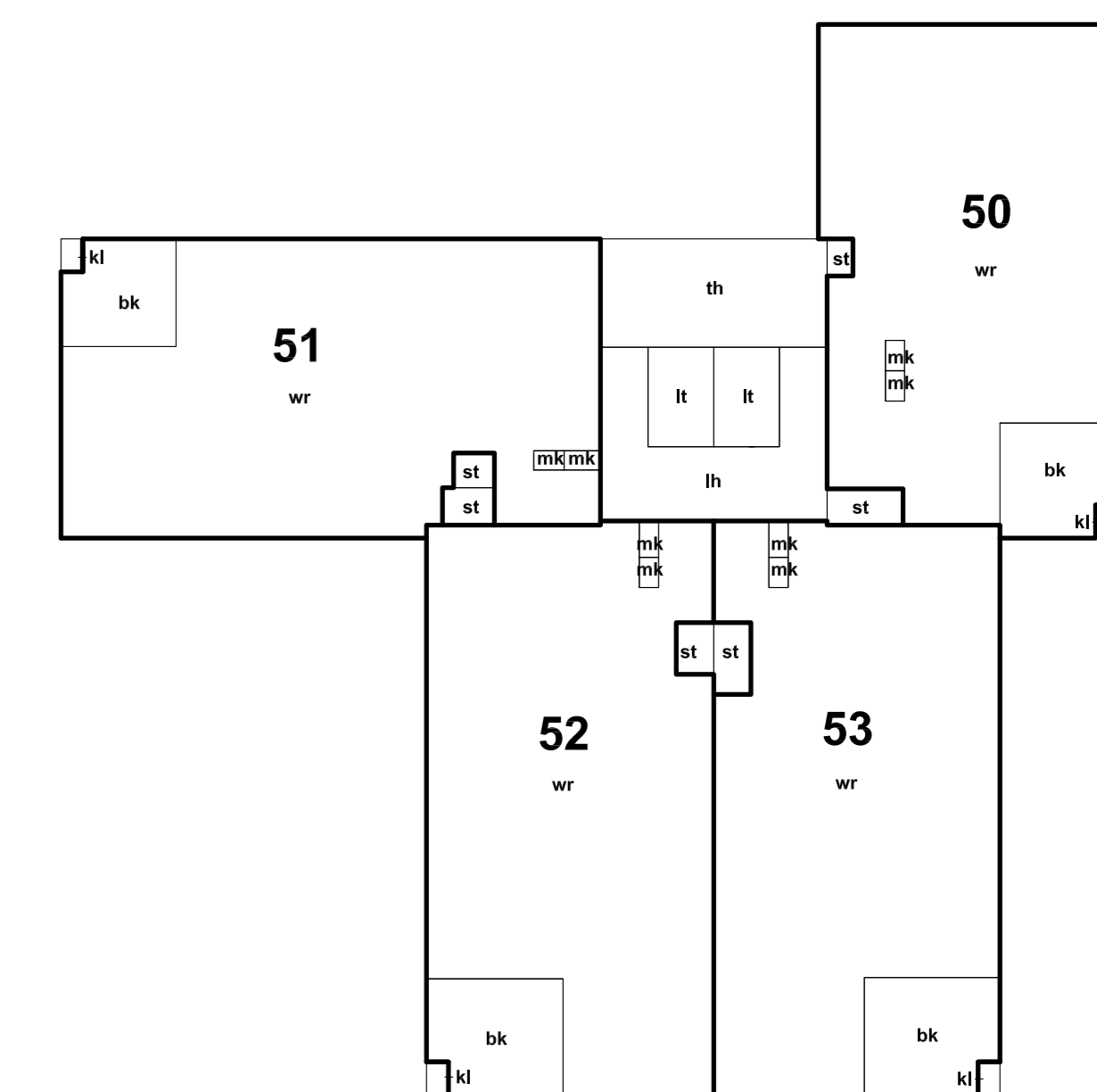
11e verdieping



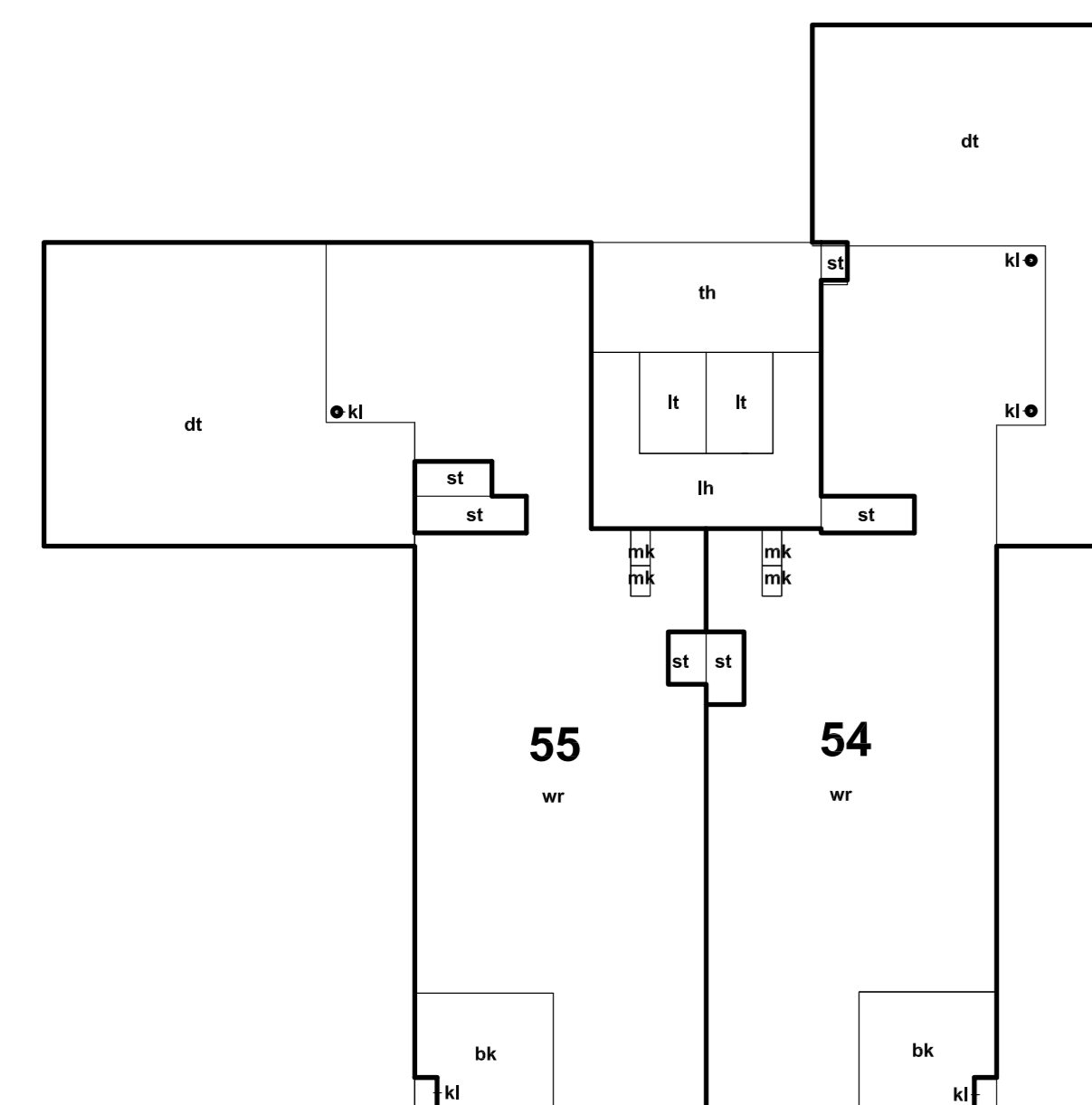
12e verdieping



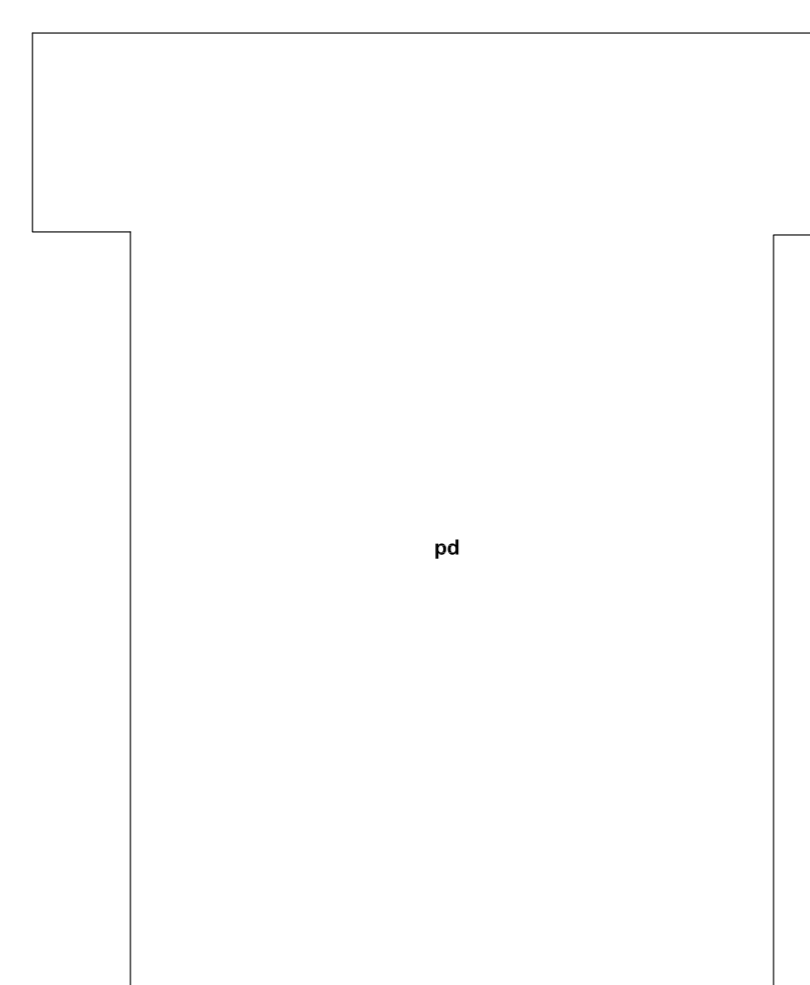
13e verdieping



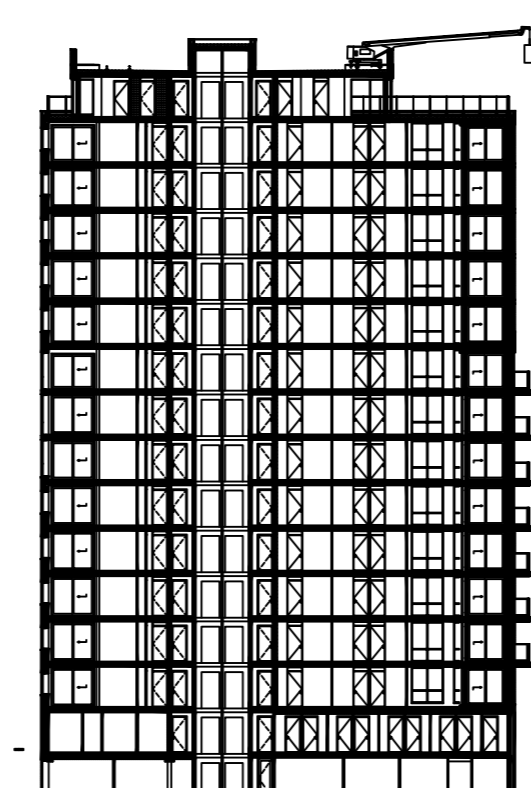
14e verdieping



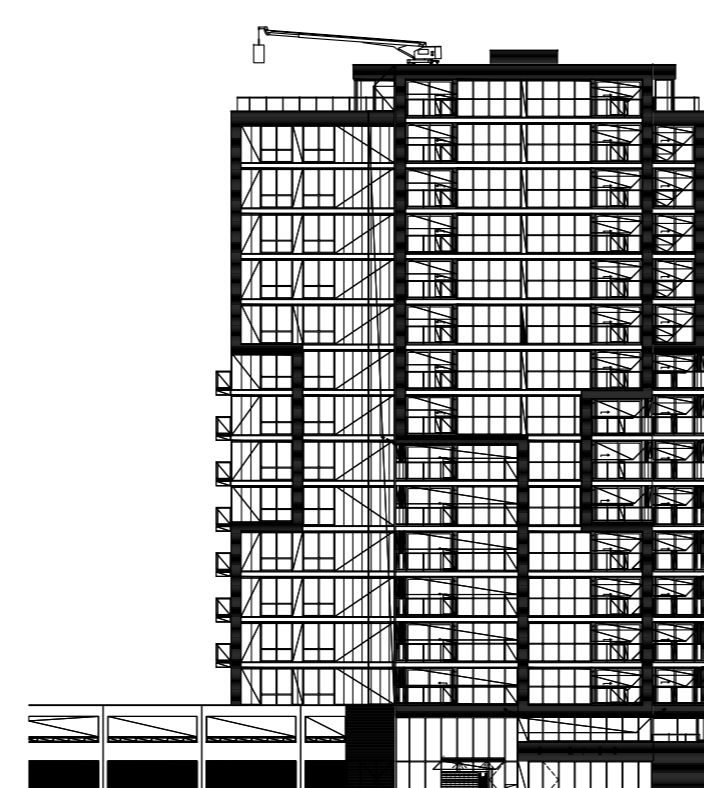
15e verdieping



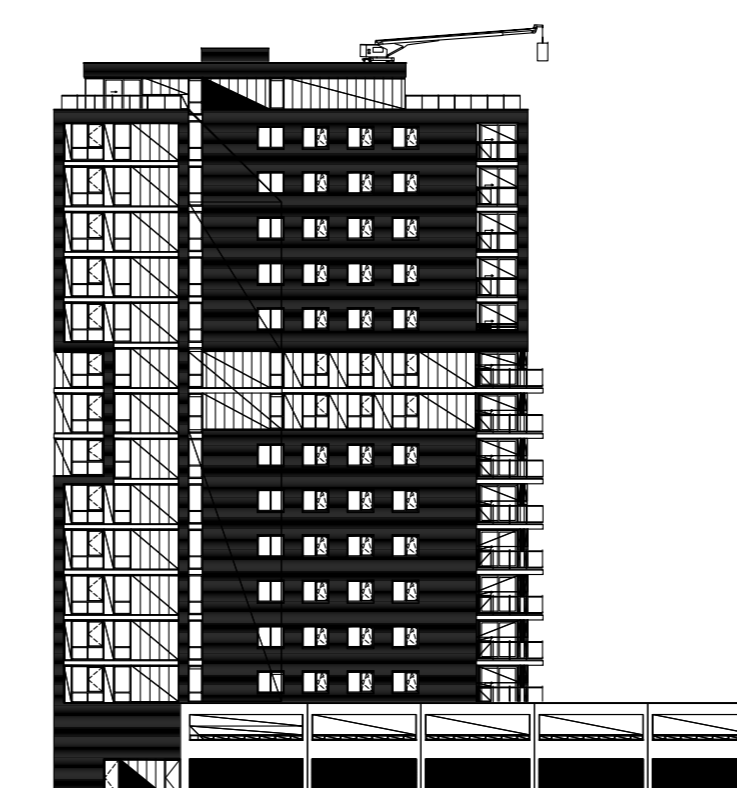
dak



doorsnede



noordoostgevel



zuidwestgevel

Legenda

- ar algemene ruimte
- bg berging
- bk balkon
- br bedrijfsruimte
- bu buienruimte
- ca centralruimte
- ca centralruimte
- cr entree
- gg gang
- gl galerij
- gr groen
- h hal
- kl kolom
- lf luffel
- l lift
- lh lifthal
- mk meterkast
- or open ruimte
- pd platdak
- pp parkeerplaats
- st schacht
- th trappenhuis
- tr technische ruimte
- vr verkeersruimte
- vw vluchtroute
- wk werkruimte
- wr woonruimte

plattegronden schaal 1 : 200

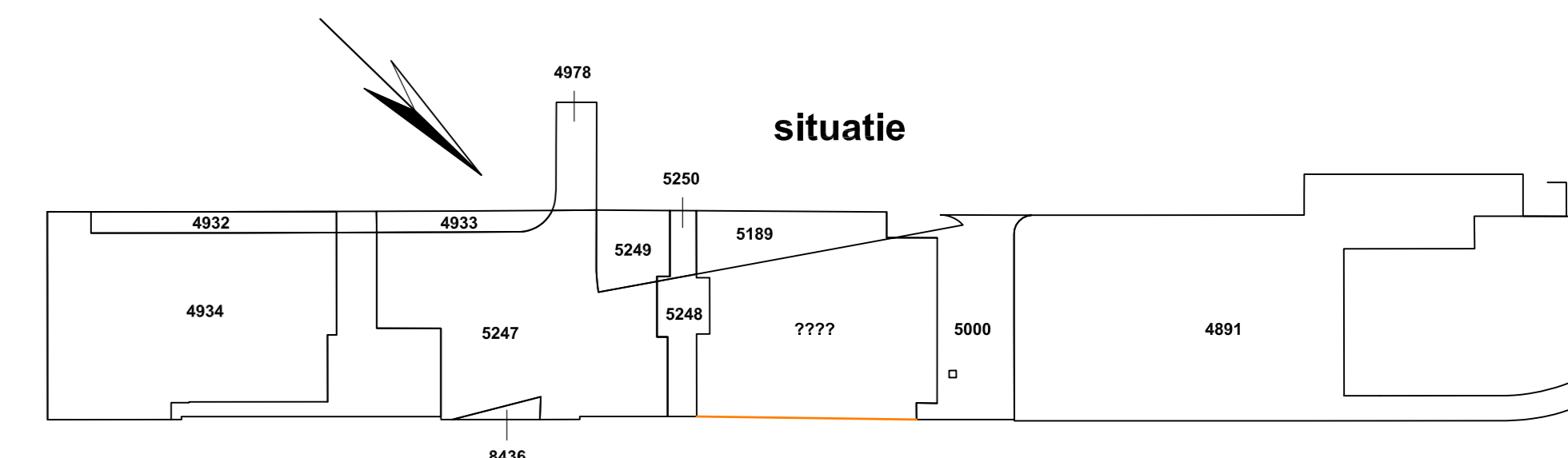
doorsnede gevels schaal 1 : 500

situatie schaal 1 : 1000

kolommen en schachten hebben een gemeenschappelijke en/of algemene functie

VKG

schaal 1 : 200



Splitsingstekening  
"Overkampark Toren III" te Dordrecht

Voorgenomen splitsing in 184 appartementsrechten van de kadastrale percelen: gemeente Dordrecht, sectie N, perceelnummer 5189, 5250, 5428 en ????